

PROPRIETARY NOTE

THIS SPECIFICATION IS THE PROPERTY OF BOE HF AND SHALL NOT BE REPRODUCED OR COPIED WITHOUT THE WRITTEN PERMISSION OF BOE HF AND MUST BE RETURNED TO BOE HF UPON ITS REQUEST

BOE

SPEC. NUMBER

S8-*

PRODUCT GROUP

TFT- LCD

REV.

P0

ISSUE DATE

2020-11-15

PAGE

1 OF 33

B3 EV121WXM-N12 Product Specification Rev.P0

| | |
|----------|---|
| BUYER | |
| SUPPLIER | HEFEI BOE Optoelectronics Technology CO., LTD |
| FG-Code | EV121WXM-N12-3GP0 |

| ITEM | BUYER SIGNATURE | DATE |
|-------|-----------------|-------|
| _____ | _____ | _____ |
| _____ | _____ | _____ |
| _____ | _____ | _____ |

| ITEM | SUPPLIER SIGNATURE | DATE |
|----------|--------------------|-------------------|
| Prepared | <u>张晓磊</u> | <u>2020.11.15</u> |
| Reviewed | <u>王盛 王贺陶</u> | _____ |
| Approved | <u>李乘揆 布占场</u> | _____ |

| | | | | |
|---|---|---------------------------------|------------|-----------------|
| PRODUCT GROUP | | REV | ISSUE DATE | BOE |
| TFT- LCD PRODUCT | | P0 | 2020-11-15 | |
| SPEC. NUMBER S8-* | SPEC . TITLE B3 EV121WXM-N12 Product Specification | | | PAGE 2 OF 33 |
| REVISION HISTORY | | | | |
| <div>(√)preliminary specification</div> <div>()Final specification</div> | | | | |
| REV. | ECN No. | DESCRIPTION OF CHANGES | DATE | PREPARED |
| P0 | | Initial Release | 2019-11-15 | 张晓磊 |
| P1 | | Add H-sync & V-sync pulse width | 2021-12-13 | 张晓磊 |
| | | | | |
| | | | | |
| | | | | |
| | | | | |

| | | | | |
|----------------------|--|-----|------------|-----------------|
| PRODUCT GROUP | | REV | ISSUE DATE | BOE |
| TFT- LCD PRODUCT | | P0 | 2020-11-15 | |
| SPEC. NUMBER S8-* | SPEC. TITLE B3 EV121WXM-N12 Product Specification | | | PAGE 3 OF 33 |

Contents

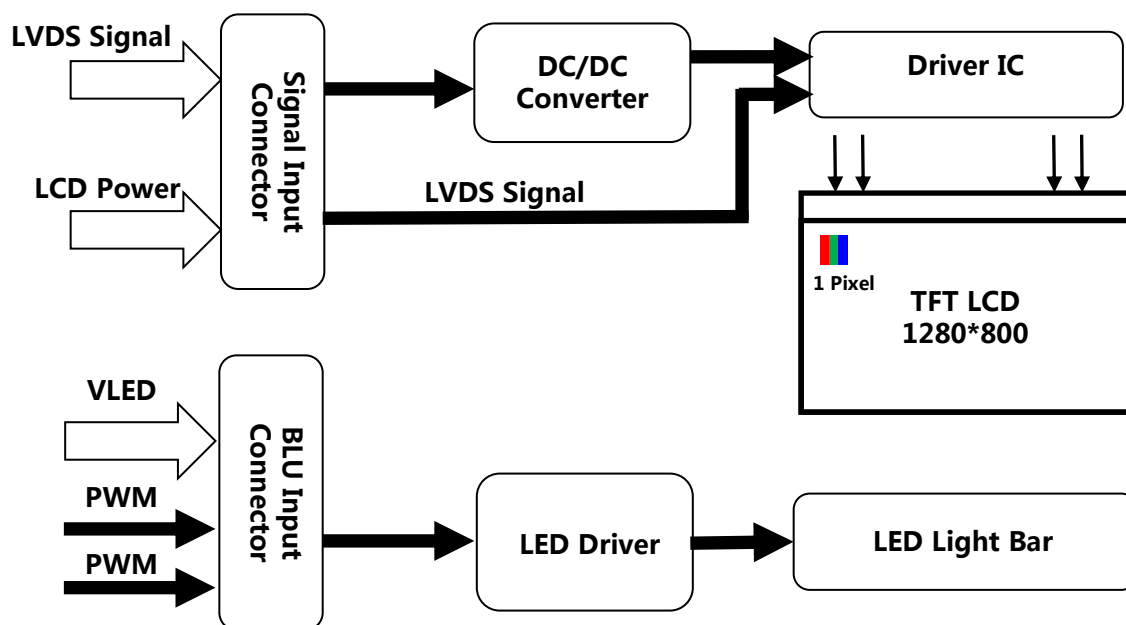
| No. | Items | Page |
|-----|---------------------------|------|
| 1.0 | General Description | 4 |
| 2.0 | Absolute Maximum Ratings | 6 |
| 3.0 | Electrical Specifications | 7 |
| 4.0 | Optical Specifications | 16 |
| 5.0 | Reliability Test | 21 |
| 6.0 | Packing Information | 22 |
| 7.0 | Product Label | 24 |
| 8.0 | Handling & Cautions | 25 |
| 9.0 | Appendix | 29 |

| | | | | |
|------------------|---------------------------------------|-----|------------|------------|
| PRODUCT GROUP | | REV | ISSUE DATE | BOE |
| TFT- LCD PRODUCT | | P0 | 2020-11-15 | |
| SPEC. NUMBER | SPEC. TITLE | | | PAGE |
| S8-* | B3 EV121WXM-N12 Product Specification | | | 4 OF 33 |

1.0 GENERAL DESCRIPTION

1.1 Introduction

EV121WXM-N12 is a color active matrix TFT LCD module using amorphous silicon TFT 's (Thin Film Transistors) as an active switching devices. This module has a **12.1inch** diagonally measured active area with **WVGA** resolutions (**1280 horizontal by 800 vertical** pixel array). Each pixel is divided into RED, GREEN, BLUE dots which are arranged in vertical stripe and this module can display 16.2M colors.



1.2 Features

- 0.5T Glass (Single)
- Normal Type
- 6/ 8bits LVDS data input selection
- Thin and light weight
- High luminance and contrast ratio, low reflection and wide viewing angle
- RoHS compliant

| | | | | |
|----------------------|--|-----|------------|-----------------|
| PRODUCT GROUP | | REV | ISSUE DATE | BOE |
| TFT- LCD PRODUCT | | P0 | 2020-11-15 | |
| SPEC. NUMBER S8-* | SPEC. TITLE B3 EV121WXM-N12 Product Specification | | | PAGE 5 OF 33 |

1.3 Application

- Monitoring(监测类)
- Ultrasound (超声波)
- Diagnostic(诊断类)
- Surgical (手术类)
- HMI (Human Machine Interface)

1.4 General Specification

The followings are general specifications at the ET104S0M-N11

<Table 1. LCD Module Specifications>

| Parameter | Specification | Unit | Remarks |
|-----------------------|--|--------|---------|
| Active Area | 261.12(H) x 163.20 (V) | mm | |
| Number Of Pixels | 1280(H)×800(V) | pixels | |
| Pixel Pitch | 68*204 | mm | |
| Pixel Arrangement | Transmissive | | |
| Display Mode | Normally Black | | |
| Display Colors | 16.7M(6bit +Hi-FRC) | colors | 6+FRC |
| Surface Treatment | AG25 | | |
| Contrast Ratio | 1200typ/1000min | | |
| Viewing Angle(CR>10) | 85°/85°/85°/85° | deg. | U/D/L/R |
| Response Time | 30typ/35max | ms | |
| Color Gamut | 72% | | NTSC |
| Brightness | 500 | cd/m2 | Typ. |
| Brightness Uniformity | 80% | | Typ. |
| Power Consumption | Panel : 0.594(Typ.) 0.66 (Max.) BLU : 7.45 (Max.) | watt | |
| Outline Dimension | 277.7 (H) x 180.6(V) | mm | |
| Weight | TBD | gram | |
| Display Orientation | Landscape Only | | |

| | | | | |
|------------------|---------------------------------------|-----|------------|------------|
| PRODUCT GROUP | | REV | ISSUE DATE | BOE |
| TFT- LCD PRODUCT | | P0 | 2020-11-15 | |
| SPEC. NUMBER | SPEC. TITLE | | | PAGE |
| S8-* | B3 EV121WXM-N12 Product Specification | | | 6 OF 33 |

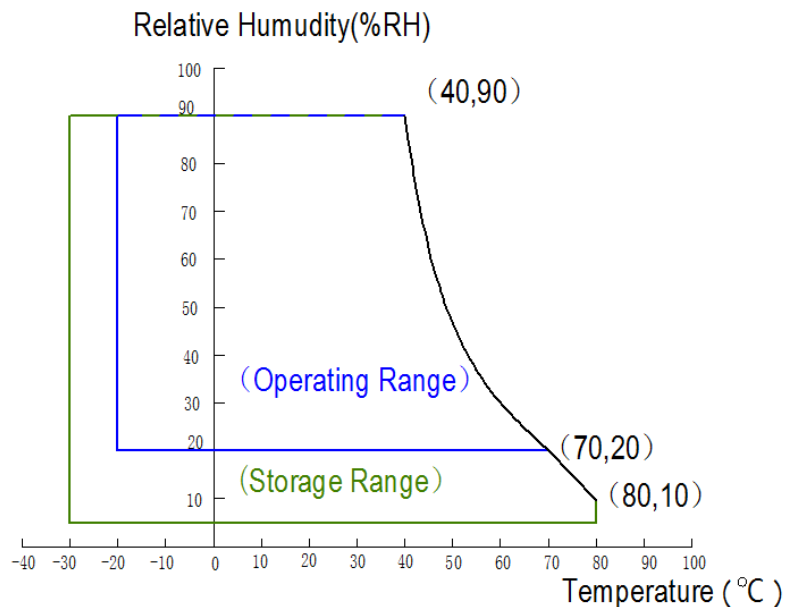
2.0 ABSOLUTE MAXIMUM RATINGS

The followings are maximum values which, if exceed, may cause faulty operation or damage to the unit. The operational and non-operational maximum voltage and current values are listed in Table 2.

< Table 2. Absolute Maximum Ratings >

| Parameter | | Symbol | Min. | Max. | Unit | Remarks |
|-----------------------|------------|------------------|------|------|------|------------|
| Power Supply | LCD Module | VDD | 0 | 3.9 | V | Ta = 25 °C |
| | BLU | V _{LED} | - | 39.6 | V | |
| | | I _{LED} | - | 160 | mA | |
| Operating Temperature | | T _{OP} | -20 | +70 | °C | Note 1 |
| Storage Temperature | | T _{ST} | -30 | +80 | °C | |

Note : 1) Temperature and relative humidity range are shown in the figure below.
Wet bulb temperature should be 39 °C max. and no condensation of water.



| | | | | |
|----------------------|--|-----|------------|-----------------|
| PRODUCT GROUP | | REV | ISSUE DATE | BOE |
| TFT- LCD PRODUCT | | P0 | 2020-11-15 | |
| SPEC. NUMBER S8-* | SPEC. TITLE B3 EV121WXM-N12 Product Specification | | | PAGE 7 OF 33 |

3.0 ELECTRICAL SPECIFICATIONS

3.1 TFT LCD Module

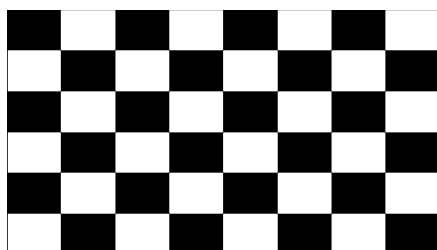
 $[T_a = 25 \pm 2 \text{ } ^\circ\text{C}]$

< Table 3. LCD Module Electrical specifications >

| Parameter | Symbol | Values | | | Unit | Notes |
|----------------------|--------------------|--------|-------|------|------|--------|
| | | Min. | Typ. | Max. | | |
| Power Supply Voltage | VDD | 3.0 | 3.3 | 3.6 | V | Note 1 |
| Power Supply Current | IDD | 150 | 180 | 200 | mA | |
| BLU Supply Voltage | V _{BLU} | 10.8 | 12 | 13.2 | V | |
| BLU Supply Current | I _{BLU} | - | | 620 | mA | |
| Power Consumption | P _D | 0.495 | 0.594 | 0.66 | W | Note 2 |
| | P _{BLU} | - | - | 7.45 | W | |
| | P _{total} | - | - | 8.11 | W | |

Notes : 1. The supply voltage is measured and specified at the interface connector of LCM.
The current draw and power consumption specified is for VDD=3.3V, Frame rate $f_v=60\text{Hz}$ and Clock frequency = 72.4MHz. Test Pattern of power supply current

| | |
|--|------------------------------|
| a) Typ : Mosaic 8 x 6 Pattern(L0/L255) | b) Max : skip subPixel(L255) |
|--|------------------------------|



2. The duration of rush current is about 2ms and rising time of Power Input is 1ms(min)

| | | | | |
|------------------|---------------------------------------|-----|------------|---------|
| PRODUCT GROUP | | REV | ISSUE DATE | BOE |
| TFT- LCD PRODUCT | | P0 | 2020-11-15 | |
| SPEC. NUMBER | SPEC. TITLE | | | PAGE |
| S8-* | B3 EV121WXM-N12 Product Specification | | | 8 OF 33 |

3.2 Back-Light Unit

Table 4. LED Bar Electrical Specifications >

[Ta =25 ± 2 °C]

| Parameter | Symbol | Values | | | Unit | Notes |
|--------------------|------------------|--------|------|------|------|----------|
| | | Min. | Typ. | Max. | | |
| LED Supply Voltage | V _{LED} | - | 38.4 | 39.6 | V | |
| LED Supply Current | I _{LED} | - | 160 | - | mA | Note 1 |
| Power Consumption | P _{LED} | - | 6.14 | 6.34 | W | |
| LED Quantity | QLED | - | 48 | - | EA | |
| LED Life Time | TLED | 50000 | - | - | Hrs | Note 2/3 |

- Notes: 1. LED Bar:4Parallel*12String) , I_{LED}=40mA*4=160mA
 P_{LED} = V_{LED} × I_{LED}(Without LED converter transfer efficiency)
2. The life time of LED, 50,000Hrs, is determined as the time at which luminance of the LED is 50% compared to that of initial value at the typical LED current on condition of continuous operating at 25 ± 2°C.
3. Only under the above operating conditions could the life time of LED be guaranteed.

| | | | | |
|------------------|---------------------------------------|-----|------------|------------|
| PRODUCT GROUP | | REV | ISSUE DATE | BOE |
| TFT- LCD PRODUCT | | P0 | 2020-11-15 | |
| SPEC. NUMBER | SPEC. TITLE | | | PAGE |
| S8-* | B3 EV121WXM-N12 Product Specification | | | 9 OF 33 |

3.3 INPUT TERMINAL PIN ASSIGNMENT

This LCD employs two interface connections, a 20 pin connector is used for the LCD module electronics interface and [a 6 pin connector is used for the backlight unit.](#)

3.3.1 Pin assignment for LCD module

[Connector : DF19G-20P-1H \(HRS\) or equivalent](#)

< Table5. Pin Assignment for LCD Module Connector >

| Pin No. | Symbol | Description | I/O |
|---------|---------|---------------|-----|
| 1 | VCC | Power supply | P |
| 2 | VCC | | P |
| 3 | HFRC_EN | 6/8bit select | I |
| 4 | GND | Ground | - |
| 5 | D0- | Pixel data | I |
| 6 | D0+ | | I |
| 7 | GND | Ground | - |
| 8 | D1- | Pixel data | I |
| 9 | D1+ | | I |
| 10 | GND | Ground | - |
| 11 | D2- | Pixel data | I |
| 12 | D2+ | | I |
| 13 | GND | Ground | - |
| 14 | CLK- | Pixel data | I |
| 15 | CLK+ | | I |
| 16 | GND | Ground | - |
| 17 | SDA | Not connect | - |
| 18 | SCL | Not connect | - |
| 19 | D3- | Pixel data | I |
| 20 | D3+ | | I |

| | | | | |
|----------------------|--|-----|------------|------------------|
| PRODUCT GROUP | | REV | ISSUE DATE | BOE |
| TFT- LCD PRODUCT | | P0 | 2020-11-15 | |
| SPEC. NUMBER S8-* | SPEC. TITLE B3 EV121WXM-N12 Product Specification | | | PAGE 10 OF 33 |

3.3.2 Pin assignment for BLU
Connector : MSA24038P6 (STM) or equivalent

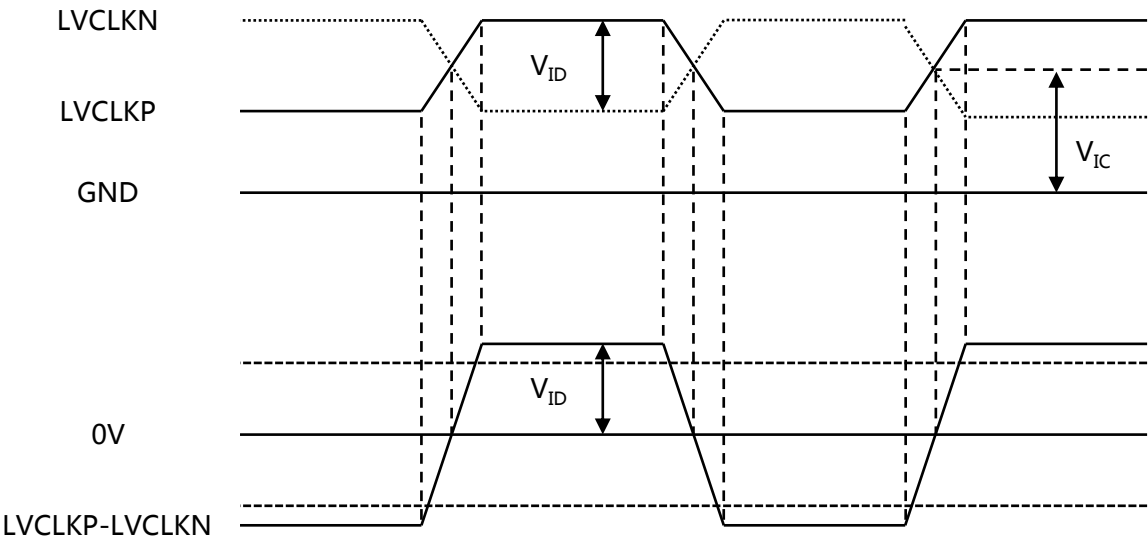
< Table6. Pin assignment for LED Bar >

| Pin No | Symbol | Description | Remarks |
|--------|--------|--------------------------|--|
| 1 | PWM | Luminance control | |
| 2 | BRTC | Backlight ON/OFF control | High or Open : Backlight ON Low : Backlight OFF |
| 3 | GND | Ground | |
| 4 | GND | Ground | |
| 5 | VDD | Power supply | |
| 6 | VDD | Power supply | |

3.4 DC Specification

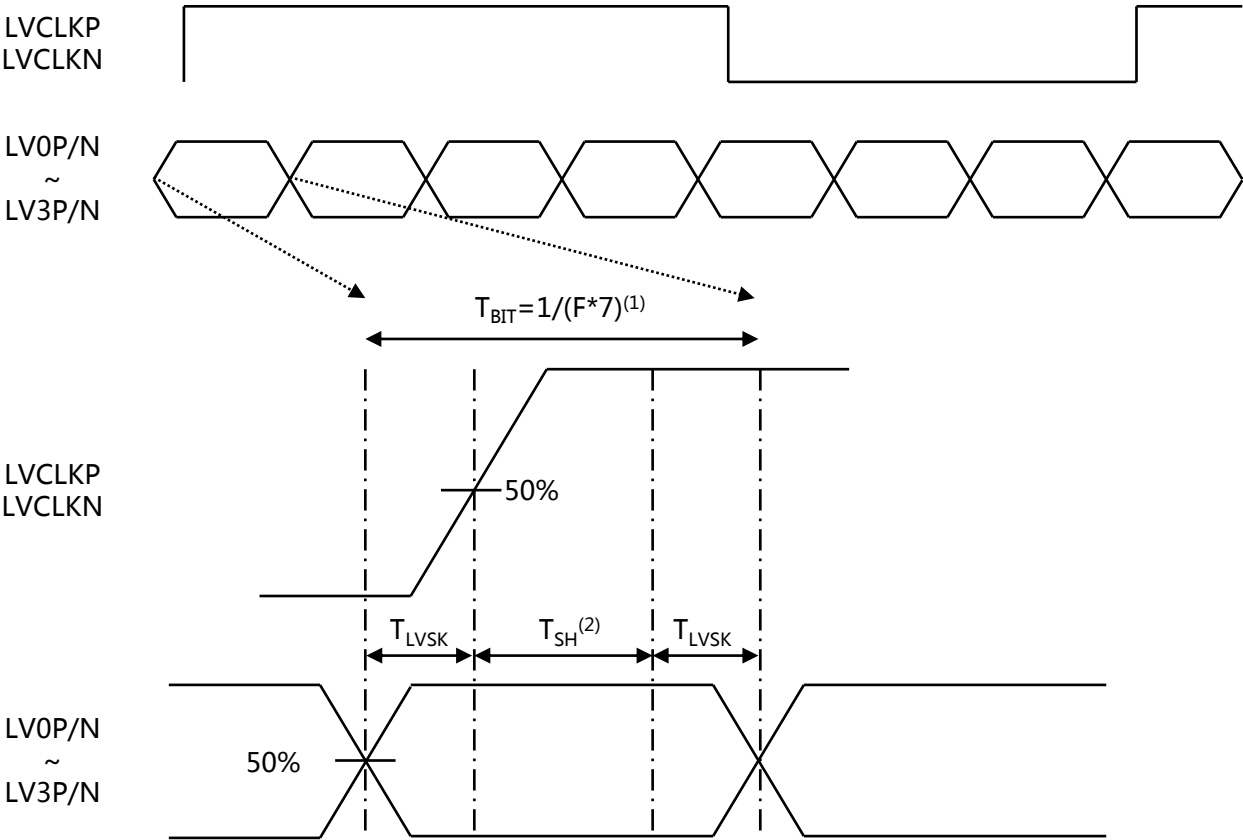
< Table7. DC Specification >

| Parameter | Symbol | Min | Typ | Max | Unit | Condition |
|-----------------------------------|-----------------|------|-----|------|------|-----------------------|
| Supply current | I _{DD} | 150 | 180 | 200 | mA | |
| LVDS DC specifications | | | | | | |
| Differential input high threshold | V _{TH} | - | - | +100 | mV | V _{IC} =1.2V |
| Differential input low threshold | V _{TL} | -100 | - | - | mV | |
| LVDS common mode voltage | V _{IC} | 0.7 | - | 1.6 | V | |
| LVDS swing voltage | V _{ID} | ±100 | - | ±600 | mV | |



< LVDS V_{ID} and V_{IC} definition >

3.5 AC Specification



Note:
 (1) T_{BIT} : Data period
 (2) Internal CLK sampling data window

< LVDS channel to channel skew >

< Table8. AC Specification >

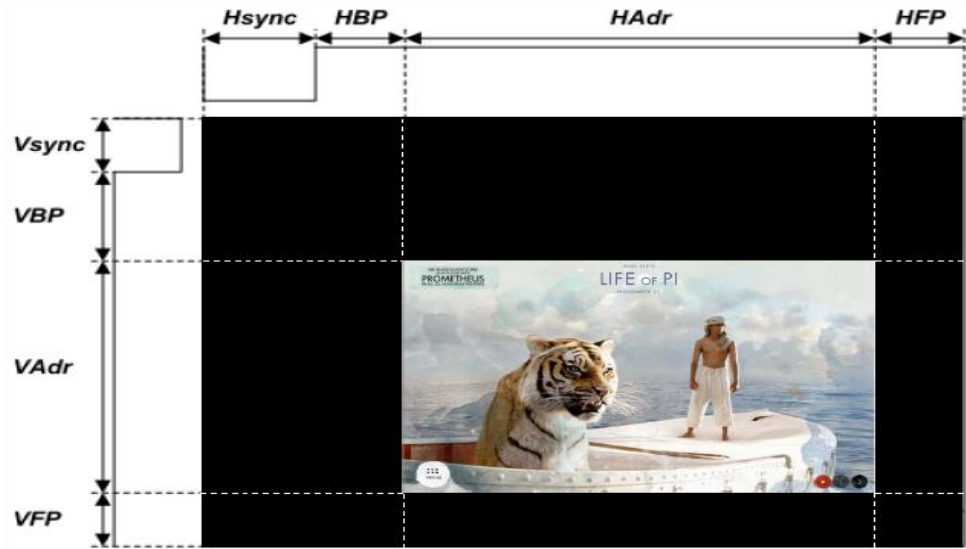
| Description | Symbol | Condition | Min | Typ | Max | Unit |
|------------------------------|------------|--|------|-----|------|------|
| LVDS Input frequency | F | - | 20 | - | 85 | MHz |
| LVDS channel to channel skew | T_{LVSK} | F=65MHz $V_{IC}=1.2V$ $V_{ID}=\pm 200mV$ | -600 | - | +600 | ps |

| | | | | |
|------------------|---------------------------------------|-----|------------|----------|
| PRODUCT GROUP | | REV | ISSUE DATE | BOE |
| TFT- LCD PRODUCT | | P0 | 2020-11-15 | |
| SPEC. NUMBER | SPEC. TITLE | | | PAGE |
| S8-* | B3 EV121WXM-N12 Product Specification | | | 13 OF 33 |

3.6 Interface timing Parameter

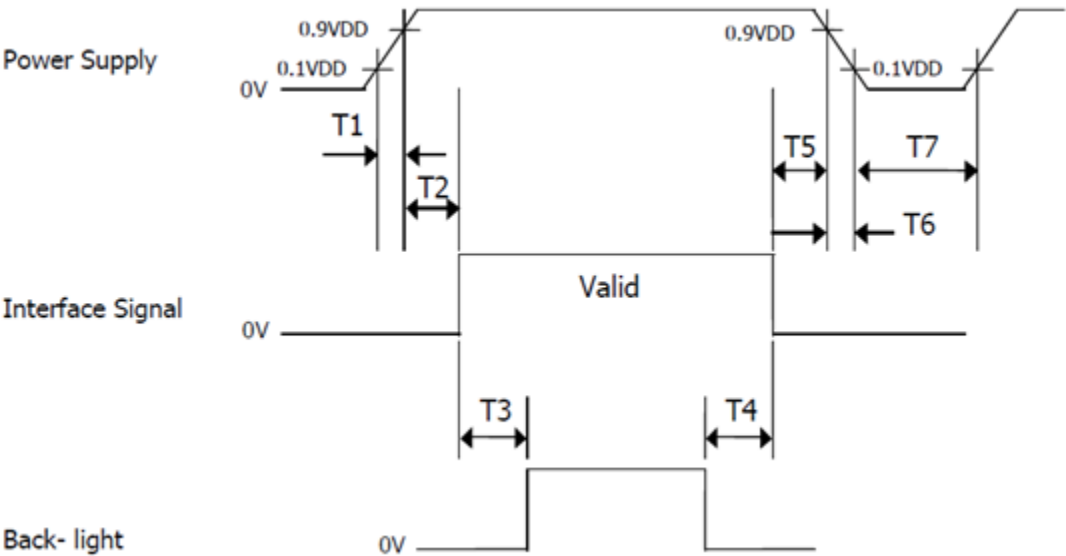
< Table9. Timing Parameter >

| Item | | | Symbol | min | typ | max | UNIT |
|--------|-------------|------------------------|--------|------|------|------|------------------|
| LCD | Frame Rate | | - | 58 | 60 | 62 | Hz |
| | Pixels Rate | | - | 66.3 | 72.4 | 78.9 | MHz |
| Timing | Horizontal | Horizontal total time | tHP | 1380 | 1440 | 1500 | t _{CLK} |
| | | Horizontal Active time | tHadr | 1280 | | | t _{CLK} |
| | | Horizontal Back Porch | tHBP | - | 40 | - | t _{CLK} |
| | | Horizontal Sync pulse | tHpw | | 40 | | t _{CLK} |
| | | Horizontal Front Porch | tHFP | - | 80 | - | t _{CLK} |
| | Vertical | Vertical total time | tvp | 824 | 838 | 872 | t _H |
| | | Vertical Active time | tVadr | 800 | | | t _H |
| | | Vertical Back Porch | tVBP | - | 14 | - | t _H |
| | | Vertical sync pulse | tVpw | | 15 | | t _H |
| | | Vertical Front Porch | tVFP | - | 9 | - | t _H |
| Lane | | | | - | 1 | - | Lane |



| | | | | |
|------------------|---------------------------------------|-----|------------|----------|
| PRODUCT GROUP | | REV | ISSUE DATE | BOE |
| TFT- LCD PRODUCT | | P0 | 2020-11-15 | |
| SPEC. NUMBER | SPEC. TITLE | | | PAGE |
| S8-* | B3 EV121WXM-N12 Product Specification | | | 14 OF 33 |

3.7 Power Sequence



< Table10. Sequence Table >

| Parameter | Value | | | Units |
|-----------|-------|------|------|-------|
| | Min. | Typ. | Max. | |
| T1 | 0 | - | 10 | (ms) |
| T2 | 0 | - | 50 | (ms) |
| T3 | 200 | - | - | (ms) |
| T4 | 200 | - | - | (ms) |
| T5 | 0 | - | 50 | (ms) |
| T6 | 0 | - | 10 | (ms) |
| T7 | 500 | - | - | (ms) |

| | | | | |
|------------------|---------------------------------------|-----|------------|------------|
| PRODUCT GROUP | | REV | ISSUE DATE | BOE |
| TFT- LCD PRODUCT | | P0 | 2020-11-15 | |
| SPEC. NUMBER | SPEC. TITLE | | | PAGE |
| S8-* | B3 EV121WXM-N12 Product Specification | | | 15 OF 33 |

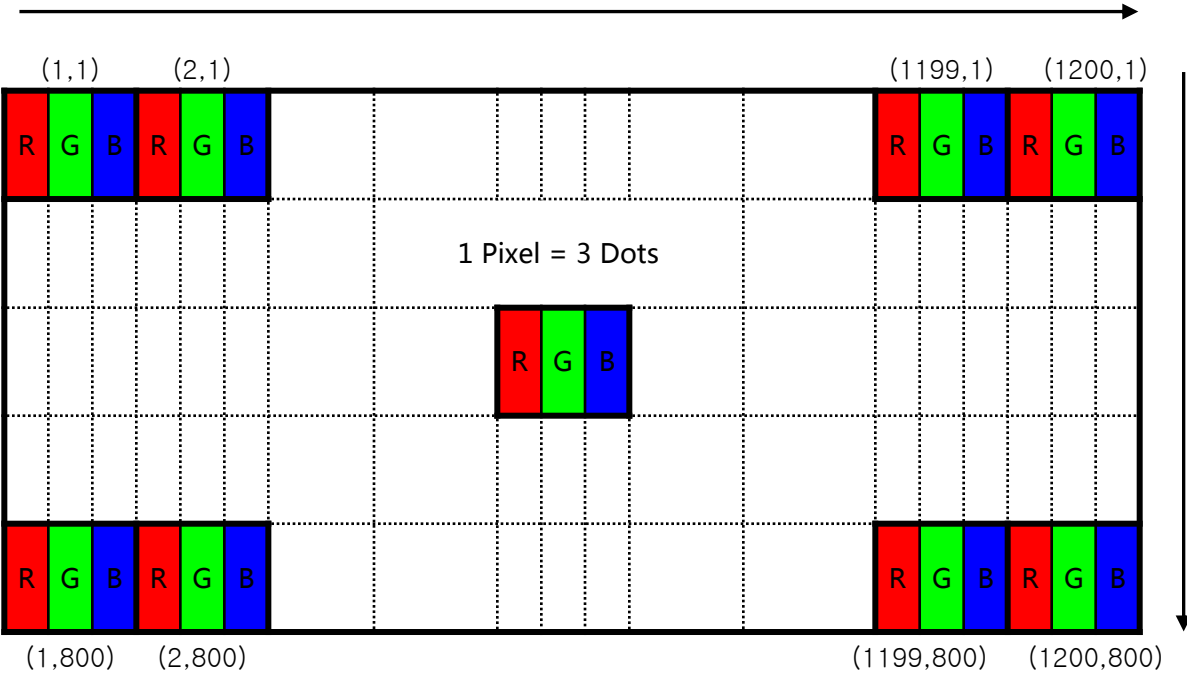
3.8 Input Color Data Mapping

< Table11. Input Signal and Display Color Table >

| Color & Gray Scale | | Input Data Signal | | | | | | | | | | | | | | | | | | | | | | | |
|---------------------|----------|-------------------|----|----|----|----|----|----|----|------------|----|----|----|----|----|----|----|-----------|----|----|----|----|----|----|----|
| | | Red Data | | | | | | | | Green Data | | | | | | | | Blue Data | | | | | | | |
| | | R7 | R6 | R5 | R4 | R3 | R2 | R1 | R0 | G7 | G6 | G5 | G4 | G3 | G2 | G1 | G0 | B7 | B6 | B5 | B4 | B3 | B2 | B1 | B0 |
| Basic Colors | Black | 0 | 0 | 0 | 0 | 0 | 0 | 0 | 0 | 0 | 0 | 0 | 0 | 0 | 0 | 0 | 0 | 0 | 0 | 0 | 0 | 0 | 0 | 0 | 0 |
| | Blue | 0 | 0 | 0 | 0 | 0 | 0 | 0 | 0 | 0 | 0 | 0 | 0 | 0 | 0 | 0 | 0 | 1 | 1 | 1 | 1 | 1 | 1 | 1 | 1 |
| | Green | 0 | 0 | 0 | 0 | 0 | 0 | 0 | 0 | 1 | 1 | 1 | 1 | 1 | 1 | 1 | 1 | 0 | 0 | 0 | 0 | 0 | 0 | 0 | 0 |
| | Cyan | 0 | 0 | 0 | 0 | 0 | 0 | 0 | 0 | 1 | 1 | 1 | 1 | 1 | 1 | 1 | 1 | 1 | 1 | 1 | 1 | 1 | 1 | 1 | 1 |
| | Red | 1 | 1 | 1 | 1 | 1 | 1 | 1 | 1 | 0 | 0 | 0 | 0 | 0 | 0 | 0 | 0 | 0 | 0 | 0 | 0 | 0 | 0 | 0 | 0 |
| | Magenta | 1 | 1 | 1 | 1 | 1 | 1 | 1 | 1 | 0 | 0 | 0 | 0 | 0 | 0 | 0 | 0 | 1 | 1 | 1 | 1 | 1 | 1 | 1 | 1 |
| | Yellow | 1 | 1 | 1 | 1 | 1 | 1 | 1 | 1 | 1 | 1 | 1 | 1 | 1 | 1 | 1 | 1 | 0 | 0 | 0 | 0 | 0 | 0 | 0 | 0 |
| | White | 1 | 1 | 1 | 1 | 1 | 1 | 1 | 1 | 1 | 1 | 1 | 1 | 1 | 1 | 1 | 1 | 1 | 1 | 1 | 1 | 1 | 1 | 1 | 1 |
| Gray Scale of Red | Black | 0 | 0 | 0 | 0 | 0 | 0 | 0 | 0 | 0 | 0 | 0 | 0 | 0 | 0 | 0 | 0 | 0 | 0 | 0 | 0 | 0 | 0 | 0 | 0 |
| | △ | 0 | 0 | 0 | 0 | 0 | 0 | 0 | 1 | 0 | 0 | 0 | 0 | 0 | 0 | 0 | 0 | 0 | 0 | 0 | 0 | 0 | 0 | 0 | 0 |
| | Darker | 0 | 0 | 0 | 0 | 0 | 0 | 1 | 0 | 0 | 0 | 0 | 0 | 0 | 0 | 0 | 0 | 0 | 0 | 0 | 0 | 0 | 0 | 0 | 0 |
| | △ | ↑ | | | | | | | | ↑ | | | | | | | | ↑ | | | | | | | |
| | ▽ | ↓ | | | | | | | | ↓ | | | | | | | | ↓ | | | | | | | |
| | Brighter | 1 | 1 | 1 | 1 | 1 | 1 | 0 | 1 | 0 | 0 | 0 | 0 | 0 | 0 | 0 | 0 | 0 | 0 | 0 | 0 | 0 | 0 | 0 | 0 |
| | ▽ | 1 | 1 | 1 | 1 | 1 | 1 | 1 | 0 | 0 | 0 | 0 | 0 | 0 | 0 | 0 | 0 | 0 | 0 | 0 | 0 | 0 | 0 | 0 | 0 |
| | Red | 1 | 1 | 1 | 1 | 1 | 1 | 1 | 1 | 0 | 0 | 0 | 0 | 0 | 0 | 0 | 0 | 0 | 0 | 0 | 0 | 0 | 0 | 0 | 0 |
| Gray Scale of Green | Black | 0 | 0 | 0 | 0 | 0 | 0 | 0 | 0 | 0 | 0 | 0 | 0 | 0 | 0 | 0 | 0 | 0 | 0 | 0 | 0 | 0 | 0 | 0 | 0 |
| | △ | 0 | 0 | 0 | 0 | 0 | 0 | 0 | 0 | 0 | 0 | 0 | 0 | 0 | 0 | 0 | 1 | 0 | 0 | 0 | 0 | 0 | 0 | 0 | 0 |
| | Darker | 0 | 0 | 0 | 0 | 0 | 0 | 0 | 0 | 0 | 0 | 0 | 0 | 0 | 0 | 1 | 0 | 0 | 0 | 0 | 0 | 0 | 0 | 0 | 0 |
| | △ | ↑ | | | | | | | | ↑ | | | | | | | | ↑ | | | | | | | |
| | ▽ | ↓ | | | | | | | | ↓ | | | | | | | | ↓ | | | | | | | |
| | Brighter | 0 | 0 | 0 | 0 | 0 | 0 | 0 | 0 | 1 | 1 | 1 | 1 | 1 | 1 | 0 | 1 | 0 | 0 | 0 | 0 | 0 | 0 | 0 | 0 |
| | ▽ | 0 | 0 | 0 | 0 | 0 | 0 | 0 | 0 | 1 | 1 | 1 | 1 | 1 | 1 | 1 | 0 | 0 | 0 | 0 | 0 | 0 | 0 | 0 | 0 |
| | Green | 0 | 0 | 0 | 0 | 0 | 0 | 0 | 0 | 1 | 1 | 1 | 1 | 1 | 1 | 1 | 1 | 0 | 0 | 0 | 0 | 0 | 0 | 0 | 0 |
| Gray Scale of Blue | Black | 0 | 0 | 0 | 0 | 0 | 0 | 0 | 0 | 0 | 0 | 0 | 0 | 0 | 0 | 0 | 0 | 0 | 0 | 0 | 0 | 0 | 0 | 0 | 0 |
| | △ | 0 | 0 | 0 | 0 | 0 | 0 | 0 | 0 | 0 | 0 | 0 | 0 | 0 | 0 | 0 | 0 | 0 | 0 | 0 | 0 | 0 | 0 | 0 | 1 |
| | Darker | 0 | 0 | 0 | 0 | 0 | 0 | 0 | 0 | 0 | 0 | 0 | 0 | 0 | 0 | 0 | 0 | 0 | 0 | 0 | 0 | 0 | 0 | 1 | 0 |
| | △ | ↑ | | | | | | | | ↑ | | | | | | | | ↑ | | | | | | | |
| | ▽ | ↓ | | | | | | | | ↓ | | | | | | | | ↓ | | | | | | | |
| | Brighter | 0 | 0 | 0 | 0 | 0 | 0 | 0 | 0 | 0 | 0 | 0 | 0 | 0 | 0 | 0 | 0 | 1 | 1 | 1 | 1 | 1 | 1 | 0 | 1 |
| | ▽ | 0 | 0 | 0 | 0 | 0 | 0 | 0 | 0 | 0 | 0 | 0 | 0 | 0 | 0 | 0 | 0 | 1 | 1 | 1 | 1 | 1 | 1 | 1 | 0 |
| | Blue | 0 | 0 | 0 | 0 | 0 | 0 | 0 | 0 | 0 | 0 | 0 | 0 | 0 | 0 | 0 | 0 | 1 | 1 | 1 | 1 | 1 | 1 | 1 | 1 |
| Gray Scale of White | Black | 0 | 0 | 0 | 0 | 0 | 0 | 0 | 0 | 0 | 0 | 0 | 0 | 0 | 0 | 0 | 0 | 0 | 0 | 0 | 0 | 0 | 0 | 0 | 0 |
| | △ | 0 | 0 | 0 | 0 | 0 | 0 | 0 | 1 | 0 | 0 | 0 | 0 | 0 | 0 | 0 | 1 | 0 | 0 | 0 | 0 | 0 | 0 | 0 | 1 |
| | Darker | 0 | 0 | 0 | 0 | 0 | 0 | 1 | 0 | 0 | 0 | 0 | 0 | 0 | 0 | 1 | 0 | 0 | 0 | 0 | 0 | 0 | 0 | 1 | 0 |
| | △ | ↑ | | | | | | | | ↑ | | | | | | | | ↑ | | | | | | | |
| | ▽ | ↓ | | | | | | | | ↓ | | | | | | | | ↓ | | | | | | | |
| | Brighter | 1 | 1 | 1 | 1 | 1 | 1 | 0 | 1 | 1 | 1 | 1 | 1 | 1 | 1 | 0 | 1 | 1 | 1 | 1 | 1 | 1 | 1 | 0 | 1 |
| | ▽ | 1 | 1 | 1 | 1 | 1 | 1 | 1 | 0 | 1 | 1 | 1 | 1 | 1 | 1 | 1 | 0 | 1 | 1 | 1 | 1 | 1 | 1 | 1 | 0 |
| | White | 1 | 1 | 1 | 1 | 1 | 1 | 1 | 1 | 1 | 1 | 1 | 1 | 1 | 1 | 1 | 1 | 1 | 1 | 1 | 1 | 1 | 1 | 1 | 1 |

| | | | | |
|------------------|---------------------------------------|-----|------------|----------|
| PRODUCT GROUP | | REV | ISSUE DATE | BOE |
| TFT- LCD PRODUCT | | P0 | 2020-11-15 | |
| SPEC. NUMBER | SPEC. TITLE | | | PAGE |
| S8-* | B3 EV121WXM-N12 Product Specification | | | 16 OF 33 |

3.9 Input Color Data Mapping



Display Position of Input Data (V-H)

| | | | | |
|------------------|---------------------------------------|-----|------------|------------|
| PRODUCT GROUP | | REV | ISSUE DATE | BOE |
| TFT- LCD PRODUCT | | P0 | 2020-11-15 | |
| SPEC. NUMBER | SPEC. TITLE | | | PAGE |
| S8-* | B3 EV121WXM-N12 Product Specification | | | 17 OF 33 |

4.0 OPTICAL SPECIFICATIONS

4.1 Overview

The test of optical specifications shall be measured in a dark room (ambient luminance \leq 1lux and temperature = $25\pm 2^{\circ}\text{C}$) with the equipment of Luminance meter system (Gonio meter system and TOPCON BM-5) and test unit shall be located at an approximate distance 50cm from the LCD surface at a viewing angle of θ and Φ equal to 0° . We refer to $\theta\emptyset=0$ ($=\theta 3$) as the 3 o' clock direction (the "right"), $\theta\emptyset=90$ ($=\theta 12$) as the 12 O' clock direction ("upward"), $\theta\emptyset=180$ ($=\theta 9$) as the 9 O' clock direction ("left") and $\theta\emptyset=270$ ($=\theta 6$) as the 6 O' clock direction ("bottom"). While scanning θ and/or \emptyset , the center of the measuring spot on the Display surface shall stay fixed.

4.2 Optical Specifications

< Table11. Optical Table >

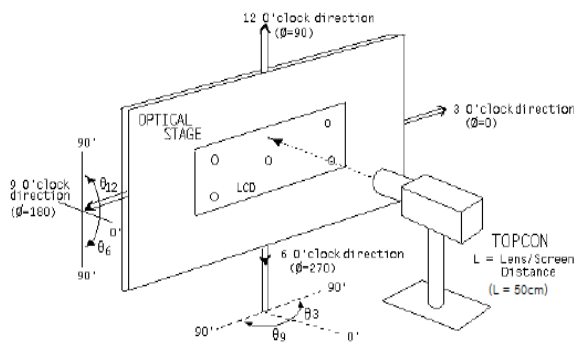
| Item | Symbol | Condition | Min | Typ. | Max | Unit | Note |
|--|-------------|--------------------|-------|--------------|-------|-------|--------|
| luminance | Bp | $\theta=0^{\circ}$ | 400 | 500 | -- | cd/m2 | Note 1 |
| Brightness Uniformity | ΔBp | | 70 | 80 | -- | % | Note 2 |
| Viewing Angle | θ_L | $Cr \geq 10$ | 80 | 85 | -- | deg | Note 3 |
| | θ_R | | 80 | 85 | -- | | |
| | ψ_T | | 80 | 85 | -- | | |
| | ψ_B | | 80 | 85 | -- | | |
| Contrast Ratio | Cr | $\theta=0^{\circ}$ | 1000 | 1200 | | - | Note 4 |
| Response Time | Tr+Tf | FF= 0° | - | 30 | 35 | ms | Note 5 |
| Color Coordinate of CIE1931 | Rx | $\theta=0^{\circ}$ | 0.618 | 0.648 | 0.678 | - | Note 6 |
| | Ry | | 0.298 | 0.328 | 0.358 | | |
| | Gx | | 0.26 | 0.29 | 0.32 | | |
| | Gy | | 0.59 | 0.62 | 0.65 | | |
| | Bx | | 0.121 | 0.151 | 0.181 | | |
| | By | | 0.025 | 0.055 | 0.085 | | |
| | Wx | | 0.283 | 0.313 | 0.343 | | |
| | Wy | | 0.299 | 0.329 | 0.359 | | |
| NTSC Ratio | NTSC | CIE1931 | 68 | 72 | -- | % | Note 7 |
| Polarization Direction of Front Polarizer | PdF | | -- | 0° | -- | deg | Note 8 |
| Polarization Direction of Rear Polarizer | PdR | | -- | 90° | -- | Deg | |

| | | | | |
|------------------|---------------------------------------|-----|------------|----------|
| PRODUCT GROUP | | REV | ISSUE DATE | BOE |
| TFT- LCD PRODUCT | | P0 | 2020-11-15 | |
| SPEC. NUMBER | SPEC. TITLE | | | PAGE |
| S8-* | B3 EV121WXM-N12 Product Specification | | | 18 OF 33 |

Note1:Luminance measurement

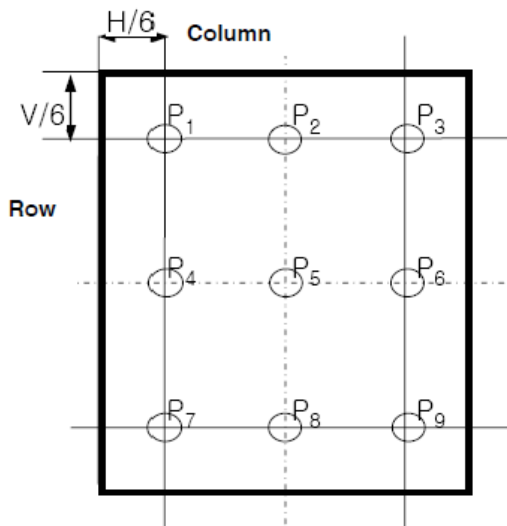
The test condition is at ILED=**160mA** and measured on the surface of LCD module at 25°C.

- The data are measured after LEDs are lighted on for more than 5 minutes and LCM displays are fully white. The brightness is the center of the LCD. Measurement equipment CS2000 or similar equipments (Field of view:1deg,Distance:50cm)
- Measuring surroundings: Dark room.
- Measuring temperature: Ta=25°C.
- Adjust operating voltage to get optimum contrast at the center of the display.
- Measured value at the center point of LCD panel must be after more than 5 minutes while backlight turning on.



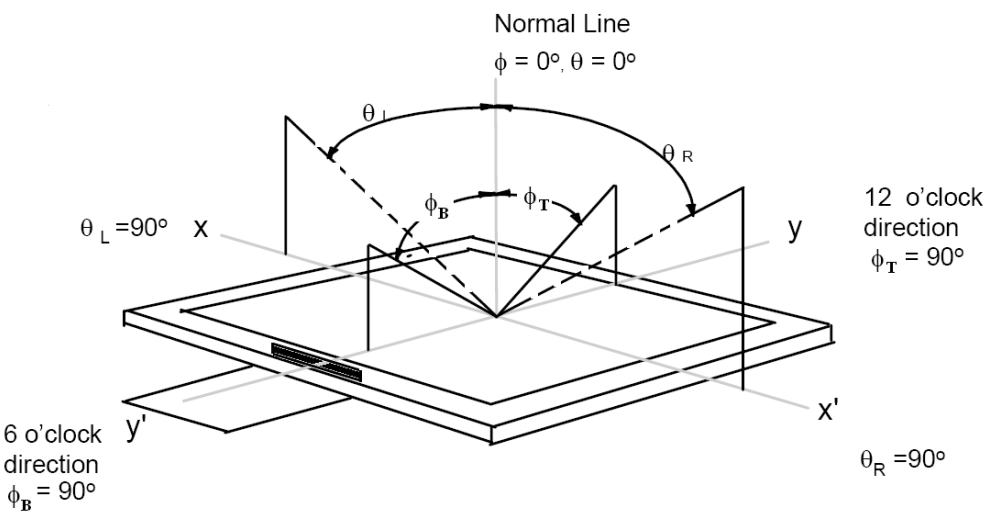
Note2:Uniformity

- The test condition is at ILED=**160mA** and measured on the surface of LCD module at 25°C.
- Measurement equipment:CS2000 or similar equipments
- The luminance uniformity is calculated by using following formula:
- $\Delta Bp = Bp \text{ (Min.)} / Bp \text{ (Max.)} \times 100 \text{ (\%)}$
- Bp (Max.) = Maximum brightness in 9 measured spots
- Bp (Min.) = Minimum brightness in 9 measured spots.



| | | | | |
|------------------|---------------------------------------|-----|------------|----------|
| PRODUCT GROUP | | REV | ISSUE DATE | BOE |
| TFT- LCD PRODUCT | | P0 | 2020-11-15 | |
| SPEC. NUMBER | SPEC. TITLE | | | PAGE |
| S8-* | B3 EV121WXM-N12 Product Specification | | | 19 OF 33 |

Note 3:The definition of Viewing Angle
Refer to the graph below marked by θ and ϕ .



Note4:The definition of Contrast Ratio (Test LCM using CS2000 or similar equipments):

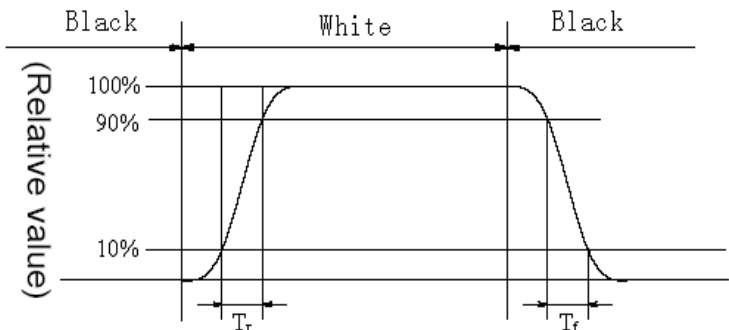
Contrast Ratio(CR)=

Luminance When LCD is at "White" state

Luminance When LCD is at "Black" state

(Contrast Ratio is measured in optimum common electrode voltage)

Note5:Definition of Response time.(Test LCD using DMS501 or similar equipments):
The output sign also photo detector are measured when the input sign also are changed from "black " to "white" (Voltage falling time)and from "white" to "black" (Voltage rising time), respectively . The response time is defined as the time interval between the 10% and 90% of amplitudes . Refer to fi gures below.



| | L0 | L1 | L2 | L3 | L4 | L5 | L6 | L7 |
|----|----|----|----|----|----|----|----|----|
| L0 | | | | | | | | |
| L1 | | | | | | | | |
| L2 | | | | | | | | |
| L3 | | | | | | | | |
| L4 | | | | | | | | |
| L5 | | | | | | | | |
| L6 | | | | | | | | |
| L7 | | | | | | | | |

Response time of gray to gray:
Measurement equipment: DMS501 or similar equipments.
Test method: we define 8 grays L0-L7,the grays of L0-L7 were defined as:0,36,73, 109, 146, 182, 219, 25 5. Theoutputsignalsofphotodetectoraremeasuredwhentheinputsignalsarechanged from "Lx" to "Ly" , x, y= [0, 7]. The response time is defined as the time interval between the 10% and 90% of amplitudes. The result of the test can be noted as below:

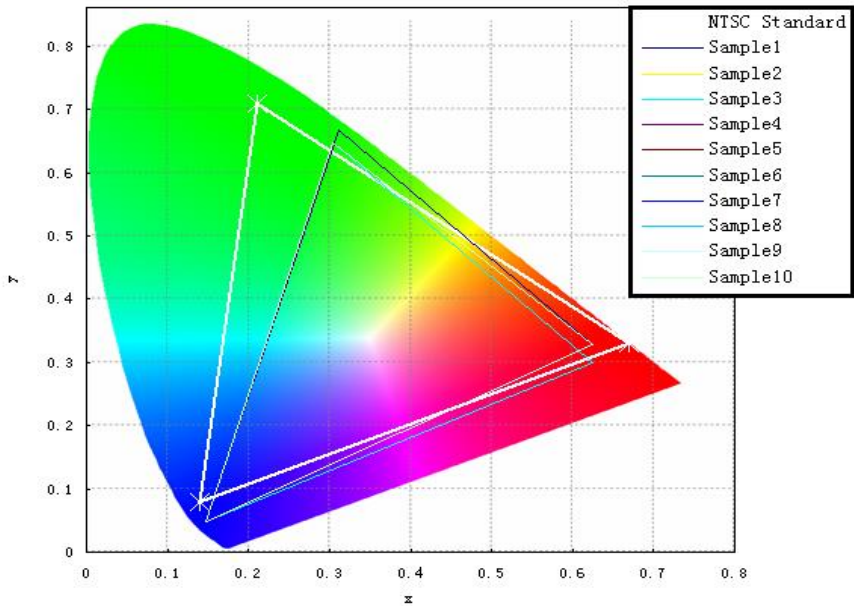
| | | | | |
|------------------|---------------------------------------|-----|------------|----------|
| PRODUCT GROUP | | REV | ISSUE DATE | BOE |
| TFT- LCD PRODUCT | | P0 | 2020-11-15 | |
| SPEC. NUMBER | SPEC. TITLE | | | PAGE |
| S8-* | B3 EV121WXM-N12 Product Specification | | | 20 OF 33 |

Note 6: Color Coordinates of CIE 1931

The test condition is at ILED=160mA and measured on the surface of LCD module at 25°C.
Measurement equipment:CS2000 or similar equipments
The Color Coordinate (CIE 1931) is the measurement of the center of the display shown in below figure.

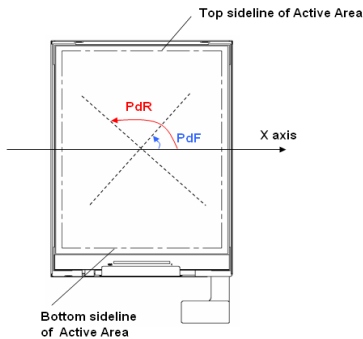
Note 7: Definition of Color of CIE Coordinate and NTSC Ratio.

$$S = \frac{\text{area of RGB triangle}}{\text{area of NTSC triangle}} \times 100\%$$



Note 8: Polarization Direction Definition

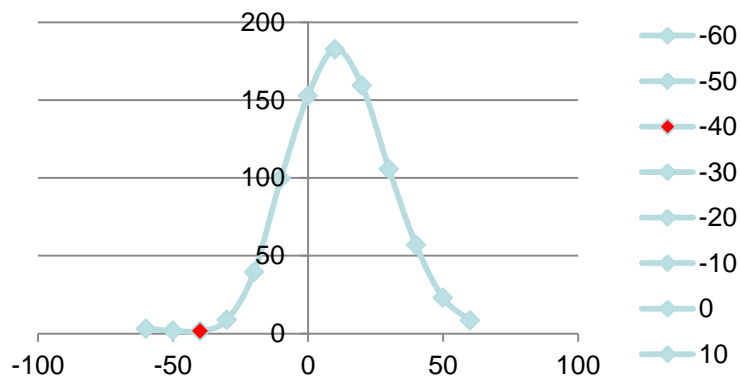
- Viewing direction is normal user viewing direction which is vertical to the display surface
- The polarizer which is closer to viewer is defined as Front Polarizer
- The polarizer which is on the rear side of viewer is defined as Rear Polarizer
- The X axis is defined as parallel line to top & bottom sidelines of the Active Area
- PdF which is marked in blue arrow is polarization degree of Front polarizer
- PdR which is marked in red arrow is polarization degree of Back polarizer
- The polarization degree parameter must be indicated in range of 0deg to 180deg according to above definition



| PRODUCT GROUP | | REV | ISSUE DATE | BOE |
|----------------------|--|-----|------------|------------------|
| TFT- LCD PRODUCT | | P0 | 2020-11-15 | |
| SPEC. NUMBER S8-* | SPEC. TITLE B3 EV121WXM-N12 Product Specification | | | PAGE 21 OF 33 |

Note 9: Definition of gray inversion angle

- Refer to the graph of note 9.
- Using luminance test method.
- Test pattern : 128 gray
- If the viewing direction is 12 o’ clock ,then test the luminance while $\theta = -60^{\circ}, \theta = -50^{\circ}, \theta = -40^{\circ}, \theta = -30^{\circ}, \theta = -20^{\circ}, \theta = -10^{\circ}, \theta = 0^{\circ}, \theta = 10^{\circ}, \theta = 20^{\circ}, \theta = 30^{\circ}, \theta = 40^{\circ}, \theta = -50^{\circ}, \theta = 60^{\circ}$. The luminance test as figure below:



| | | | | |
|----------------------|--|-----|------------|------------------|
| PRODUCT GROUP | | REV | ISSUE DATE | BOE |
| TFT- LCD PRODUCT | | P0 | 2020-11-15 | |
| SPEC. NUMBER S8-* | SPEC. TITLE B3 EV121WXM-N12 Product Specification | | | PAGE 22 OF 33 |

5.0 RELIABILITY TEST

The Reliability test items and its conditions are shown in below.

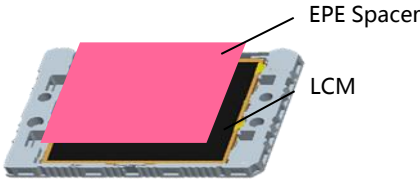
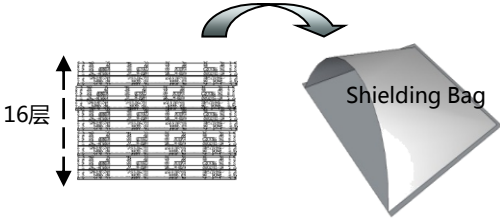
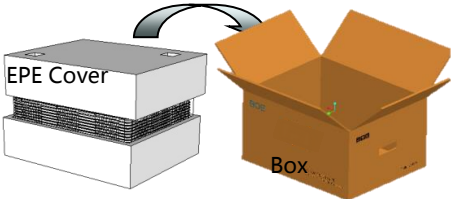

<Table 12. Reliability Test Parameters >

| No | Test Items | Conditions |
|----|--|---|
| 1 | HAST | 110℃、 85%RH、 0.122Mpa , 8hr |
| 2 | High temperature & high humidity (storage test) | 60℃ , 90%RH , 240hr |
| 3 | High temperature storage test | 80℃ , 240hr |
| 4 | Low temperature storage test | -30℃ , 240hr |
| 5 | High temperature & high humidity (operation test) | 60℃ , 90%RH , 240hr |
| 6 | Low temperature operation test | -20℃ , 240hr |
| 7 | High temperature operation test | 70℃ , 240hr |
| 8 | Thermal Shock Test | -40℃~85℃ , 1hr/cycle , 100cycle |
| 9 | PCT | 121℃ , 100%RH , 2atm , 12hr |
| 10 | ESD | 150pF , 330Ω , ±8kV(Contact) , ±15kV (Air) |
| 11 | Packing VIB | 1.47G , 1-200hz , X , Y , ±Z , 30min/Axis |

| | | | | |
|------------------|---------------------------------------|-----|------------|----------|
| PRODUCT GROUP | | REV | ISSUE DATE | BOE |
| TFT- LCD PRODUCT | | P0 | 2020-11-15 | |
| SPEC. NUMBER | SPEC. TITLE | | | PAGE |
| S8-* | B3 EV121WXM-N12 Product Specification | | | 23 OF 33 |

6.0 PACKING INFORMATION(产品形态： LCM)

Packing procedure:

| | |
|---|---|
| <p>将1pcs LCM放入Tray中（Panel朝上），然后在LCM上放置1pcs EPE Spacer 容量：1pcs EPE Spacer/Tray 1pcs LCM/Tray</p> | <p>堆叠放置15pcs Tray（不旋转堆叠），顶部再放置1pcs 空Tray，然后将16pcs Tray 平放入Shielding Bag并抽真空（注意真空不要过紧，避免Tray变形挤压产品）</p> |
|  <p>Step 1</p> |  <p>Step 2</p> |
| <p>在Inner Box放置1pcs EPE Cover，将堆叠好的16pcs Tray平放入Box，再放置1pcs EPE Cover，对Box进行封箱，并粘贴Box标签 容量：15pcs LCM/Box</p> | <p>每个Pallet上放3层Box，1层8箱，共计24箱，Pallet外进行打包带、缠膜包装 容量：24pcs Box/Pallet 360pcs LCM/Pallet</p> |
|  <p>Step 3</p> |  <p>Step 4</p> |

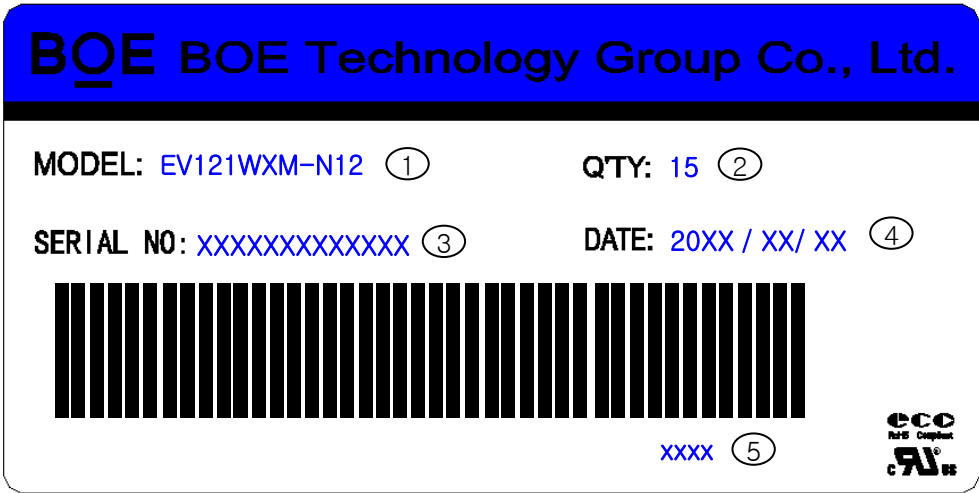
6.1 Packing Note(产品形态： LCM)

- Box Dimension: 375mm(W) x 280mm(D) x 290mm(H)
- Package Quantity in one Box: 15pcs

| | | | | |
|------------------|---------------------------------------|-----|------------|----------|
| PRODUCT GROUP | | REV | ISSUE DATE | BOE |
| TFT- LCD PRODUCT | | P0 | 2020-11-15 | |
| SPEC. NUMBER | SPEC. TITLE | | | PAGE |
| S8-* | B3 EV121WXM-N12 Product Specification | | | 24 OF 33 |

6.2 Box label (产品形态：LCM)

- Label Size :115mm*55mm
- Contents
 - Model : First 12 digits of FG-Code: EV121WXM-N12
 - Q`ty : 15pcs/Box
 - Serial No. : Box Serial No. as shown below.
 - Date : Packing Date
 - FG Code : Last 4 digits of FG-Code



| No. | 1 | 2 | 3 | 4 | 5 | 6 | 7 | 8 | 9 | 10 | 11 | 12 | 13 |
|-------------|-----|---|-------|----|------|---|-------|-----|---------------|----|----|----|----|
| Code | X | X | S | 3 | 2 | 0 | 9 | 0 | 0 | 0 | 0 | 0 | 1 |
| Description | GBN | | Grade | B3 | Year | | Month | Rev | Serial number | | | | |

| | | | | |
|------------------|---------------------------------------|-----|------------|----------|
| PRODUCT GROUP | | REV | ISSUE DATE | BOE |
| TFT- LCD PRODUCT | | P0 | 2020-11-15 | |
| SPEC. NUMBER | SPEC. TITLE | | | PAGE |
| S8-* | B3 EV121WXM-N12 Product Specification | | | 25 OF 33 |

7.0 Product Label



Label Size: 48mmx12mmx0.075mm, 44-9231007

- 1. FG-CODE: EV121WXM-N12
- 2. MDL ID
- 3. MDL ID对应条形码

BOE MDL ID rule

| 序列号 | 1 | 2 | 3 | 4 | 5 | 6 | 7 | 8 | 9 | 10 | 11 | 12 | 13 | 14 | 15 | 16 | 17 |
|-----|-------|---|----|----|---|---|---|------------|---|----|----|-----|----|----|----|----|----|
| 代码 | X | X | X | 3 | X | X | X | 3 | G | P | 0 | X | X | X | X | X | X |
| 描述 | GBN代码 | | 等级 | B3 | 年 | 月 | 日 | FG Code后四位 | | | | 序列号 | | | | | |

| | | | | |
|------------------|---------------------------------------|-----|------------|------------|
| PRODUCT GROUP | | REV | ISSUE DATE | BOE |
| TFT- LCD PRODUCT | | P0 | 2020-11-15 | |
| SPEC. NUMBER | SPEC. TITLE | | | PAGE |
| S8-* | B3 EV121WXM-N12 Product Specification | | | 26 OF 33 |

8.0 Handling & Cautions

Please pay attention to the followings when you use this TFT LCD Module.

8.1 Mounting Precautions

- Use finger-stalls with soft gloves in order to keep display clean during the incoming inspection and assembly process.
 - You must mount a module using specified mounting holes (Details refer to the drawings).
 - You should consider the mounting structure so that uneven force (ex. Twisted stress, Concentrated stress) is not applied to the module. And the case on which a module is mounted should have sufficient strength so that external force is not transmitted directly to the module.
 - Do not apply mechanical stress or static pressure on module; Abnormal display cause by pressing some parts of module during assembly process, do not belong to product failure, the press should be agreed by two sides.
 - Determine the optimum mounting angle, refer to the viewing angle range in the specification for each model.
 - Do not apply mechanical stress or static pressure on module, and avoid impact, vibration and falling.
 - Acetic acid type and chlorine type materials for the cover case are not desirable because the former generates corrosive gas of attacking the polarizer at high temperature and the latter causes circuit break by electro-chemical reaction.
 - Protection film for polarizer on the module should be slowly peeled off before display.
 - Be careful to prevent water & chemicals contact the module surface.
 - You should adopt radiation structure to satisfy the temperature specification.
 - Do not touch, push or rub the exposed polarizers with glass, tweezers or anything harder than HB pencil lead. And please do not rub with dust clothes with chemical treatment.
- Do not touch the surface of polarizer for bare hand or greasy cloth.(Some cosmetics are detrimental to the polarizer.)

| | | | | |
|------------------|---------------------------------------|-----|------------|------------|
| PRODUCT GROUP | | REV | ISSUE DATE | BOE |
| TFT- LCD PRODUCT | | P0 | 2020-11-15 | |
| SPEC. NUMBER | SPEC. TITLE | | | PAGE |
| S8-* | B3 EV121WXM-N12 Product Specification | | | 27 OF 33 |

- When the surface becomes dusty, please wipe gently with absorbent cotton or other soft materials like chamois soaks with petroleum benzine. Normal-hexane & alcohol is recommended for cleaning the adhesives used to attach front / rear polarizers. Do not use acetone, toluene , because they cause chemical damage to the polarizer.
- Wipe off saliva or water drops as soon as possible. Their long time contact with polarizer causes deformations and color fading.
- This module has its circuitry PCB' s on the rear side and Driver IC, should be handled carefully in order not to be stressed.
- Avoid impose stress on PCB and Driver IC during assembly process ,Do not drawing, bending, COF package & wire.
- Do not disassemble the module.

8.2 Operating Precautions

- Do not connector or disconnect the cable to/from the Module at the "Power On" Condition.
- When the module is operating, do not lose CLK, ENAB signals. If any one of these signals is lost, the module would be damaged.
- Obey the supply voltage sequence. If wrong sequence is applied, the module would be damaged.
- Do not allow to adjust the adjustable resistance or switch.
- The electrochemical reaction caused by DC voltage will lead to LCD module degradation, so DC drive should be avoided.
- The LCD modules use C-MOS LSI drivers, so customers are recommended that any unused input terminal would be connected to Vdd or Vss, do not input any signals before power is turn on, and ground you body, work/assembly area, assembly equipment to protect against static electricity.
- Do not exceed the absolute maximum rating value. (supply voltage variation, input voltage variation, variation in part contents and environmental temperature, and so on) Otherwise the Module may be damaged.
- Module has high frequency circuits. Sufficient suppression to the electromagnetic interference shall be done by system manufacturers. Grounding and shielding methods may be important to minimized the interference.

| | | | | |
|------------------|---------------------------------------|-----|------------|------------|
| PRODUCT GROUP | | REV | ISSUE DATE | BOE |
| TFT- LCD PRODUCT | | P0 | 2020-11-15 | |
| SPEC. NUMBER | SPEC. TITLE | | | PAGE |
| S8-* | B3 EV121WXM-N12 Product Specification | | | 28 OF 33 |

- The cables should be as short as possible between System Board and PCB interface.
- Connectors are precision devices to transmit electrical signals, and operators should plug in parallel.
- Be careful for condensation at sudden temperature change. Condensation makes damage to polarizer or electrical contacted parts. And after fading condensation, smear or spot will occur.

8.3 Electrostatic Discharge Precautions

- Avoid the use work clothing made of synthetic fibers. We recommend cotton clothing or other conductivity-treated fibers.
- Since a module is composed of electronic circuits, it is not strong to electrostatic discharge. Make certain that treatment persons are connected to ground through wrist band etc.
- Do not close to static electricity to avoid product damage.
- Do not touch interface pin directly.

8.4 Precautions for Strong Light Exposure

- Do not leave the module operation or storage in Strong light . Strong light exposure causes degradation of polarizer and color filter.

| | | | | |
|----------------------|--|-----|------------|------------------|
| PRODUCT GROUP | | REV | ISSUE DATE | BOE |
| TFT- LCD PRODUCT | | P0 | 2020-11-15 | |
| SPEC. NUMBER S8-* | SPEC. TITLE B3 EV121WXM-N12 Product Specification | | | PAGE 29 OF 33 |

8.5 Precautions for Storage

A. Atmosphere Requirement

| ITEM | UNIT | MIN | MAX |
|---------------------|--|-----|-----|
| Storage Temperature | (°C) | 5 | 40 |
| Storage Humidity | (%rH) | 40 | 75 |
| Storage Life | 6 months | | |
| Storage Condition | <ul style="list-style-type: none"> The storage room should be equipped with a dark and good ventilation facility. Prevent products from being exposed to the direct sunlight, moisture and water. The product need to keep away from organic solvent and corrosive gas. Be careful for condensation at sudden temperature change. Storage condition is guaranteed under packing conditions. | | |

B. Package Requirement

- The product should be placed in a sealed polythene bag.
- Product Should be placed on the pallet, Which is away from the floor, Be cautions not to pile the product up.
- The polarizer surface should not come in contact with any other object. It is recommended that they be stored in the container in which they were shipped.
- As the original protective film, do not use the adhesive protective film to avoid change of Pol color and characteristic.

8.6 Precautions for protection film

- Remove the protective film slowly, keeping the removing direction approximate 30-degree not vertical from panel surface, If possible, under ESD control device like ion blower, and the humidity of working room should be kept over 50%RH to reduce the risk of static charge.
- People who peeled off the protection film should wear anti-static strap and grounded well.

| | | | | |
|------------------|---------------------------------------|-----|------------|------------|
| PRODUCT GROUP | | REV | ISSUE DATE | BOE |
| TFT- LCD PRODUCT | | P0 | 2020-11-15 | |
| SPEC. NUMBER | SPEC. TITLE | | | PAGE |
| S8-* | B3 EV121WXM-N12 Product Specification | | | 30 OF 33 |

8.7 Appropriate Condition for Commercial Display

-Generally large-sized LCD modules are designed for consumer applications . Accordingly, long-term display like in Commercial Display application, can cause uneven display including image sticking. To optimize module's lifetime and function, several operating usages are required.

1. Normal operating condition

- Temperature: $20\pm 15^{\circ}\text{C}$
- Operating Ambient Humidity : $55\pm 20\%$
- Display pattern: dynamic pattern (Real display)
- Well-ventilated place is recommended to set up Commercial Display system

2. Special operating condition

a. Ambient condition

- Well-ventilated place is recommended to set up Commercial Display system.

b. Power and screen save

- Periodical power-off or screen save is needed after long-term display.

c. As the low temperature, the response time is greatly delayed. As the high temperatures (higher than the operating temperature) the LCD module may turn black screen. The above phenomenon cannot explain the failure of the display. When the temperature returns to the normal operating temperature, the LCD module will return to normal display.

d. When expose to drastic fluctuation of temperature (hot to cold or cold to hot) ,the LCD module may be affected; Specifically, drastic temperature fluctuation from cold to hot ,produces dew on the LCD module 's surface which may affect the operation of the polarizer and LCD module .

e. Do not exceed the absolute maximum rating value. (supply voltage variation, input voltage variation, variation in part contents and environmental temperature, and so on) Otherwise the Module may be damaged.

f. Product reliability and functions are only guaranteed when the product is used under right operation usages. If product will be used in extreme conditions such as high temperature, high humidity, high altitude, special display images, running time, long time operation, outdoor operation, etc. It is strongly recommended to contact BOE for filed application engineering advice. Otherwise, its reliability and function may not be guaranteed. Extreme conditions are commonly found at airports, transit stations, banks, stock market and controlling systems.

| | | | | |
|------------------|---------------------------------------|-----|------------|------------|
| PRODUCT GROUP | | REV | ISSUE DATE | BOE |
| TFT- LCD PRODUCT | | P0 | 2020-11-15 | |
| SPEC. NUMBER | SPEC. TITLE | | | PAGE |
| S8-* | B3 EV121WXM-N12 Product Specification | | | 31 OF 33 |

3. Operating usages to protect against image sticking due to long-term static display.
 - a. Suitable operating time: under 20 hours a day.
 - b. Static information display recommended to use with moving image.
 - Cycling display between 5 minutes' information(static) display and 10 seconds' moving image.
 - c. Background and character (image) color change
 - Use different colors for background and character, respectively.
 - Change colors themselves periodically.
 - d. Avoid combination of background and character with large different luminance.
 - 1) Abnormal condition just means conditions except normal condition.
 - 2) Black image or moving image is strongly recommended as a screen save
4. Lifetime in this spec. is guaranteed only when Commercial Display is used according to operating usages.

8.8 Other Precautions

A. LC Leak

- If the liquid crystal material leaks from the panel, it is recommended to wash the LC with acetone or ethanol and then burn it.
- If the liquid crystal material leaks from the panel, it should be kept away from the eyes or mouth. In case of contact with hands, skin or clothes, it has to be washed away thoroughly with soap.
- If LC in mouth, mouth need to be washed, drink plenty of water to induce vomiting and follow medical advice.
- If LC touch eyes, eyes need to be washed with running water at least 15 minutes.

B. Rework

- When returning the module for repair or etc., Please pack the module not to be broken. We recommend to use the original shipping packages.

